



**SIR JOHN DEANE'S
SIXTH FORM COLLEGE**
1557

Staff Guidance

Android Wi-Fi Setup Guide for Sir John Deane's Sixth Form College

This guide will walk you through connecting your Android device to the college Wi-Fi network in a few simple steps. Follow along to get connected quickly and securely.

android 

Step 1: Connect to Onboarding Wi-Fi



Open Settings

Locate and tap the Settings app on your Android device

Find Wi-Fi Settings

Tap "Network and Internet" menu (or Wi-Fi Settings)

Join Onboarding Network

Select and join "Onboarding Wi-Fi" (You can ignore any "no internet access" messages)

Step 2: Download App & Onboard

While connected to Onboarding Wi-Fi:

- Scan the QR Code and download and install the “RUCKUS CloudPath App” from Google Play Store



Do not open CloudPath App
– Follow the guide below

- Open Chrome Browser on your device, navigate to :
- **<http://wifi.sjd.ac.uk>**

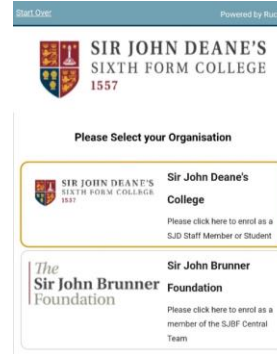
You can also scan the QR code shown on the right to access the setup page directly.



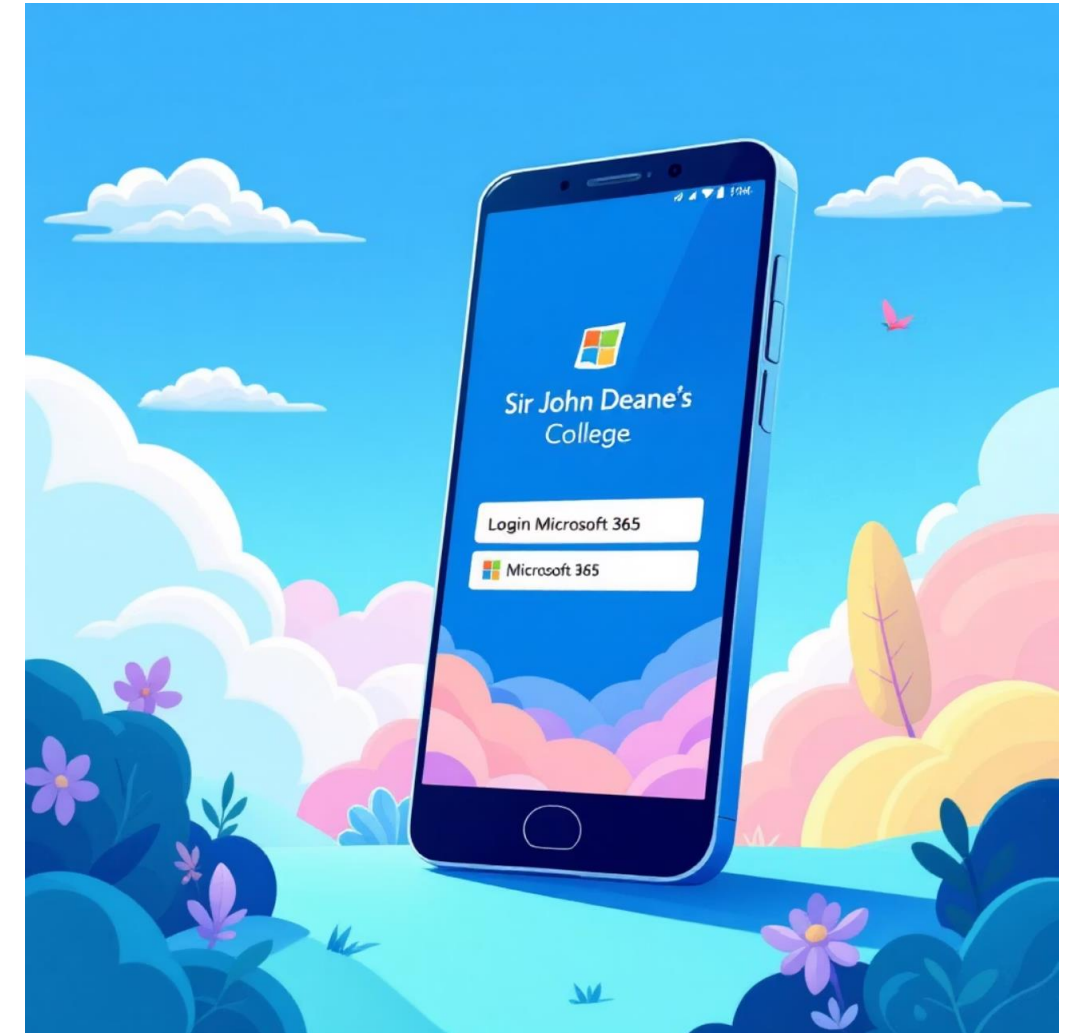
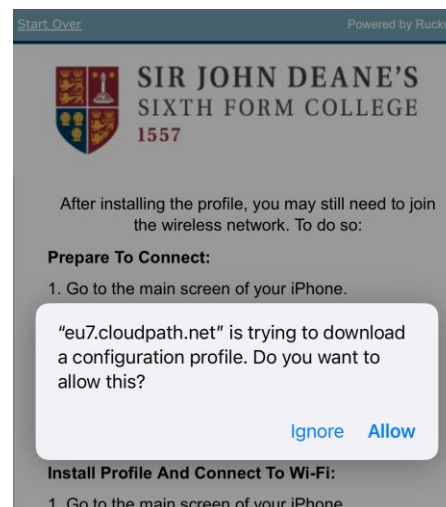
Step 3: Select Sir John Deane's College

On the setup page:

- Select "Sir John Deane's College" from the options
- If not already signed in, you'll be prompted for your Microsoft 365 credentials
- Enter your college email address and password



📄 Your Microsoft 365 credentials are the same ones you use for your college email and other college services.



Step 4: Install the Network



Click "Install the Network"

This opens the Cloudpath app



Accept Permissions

Allow location "while using the app"



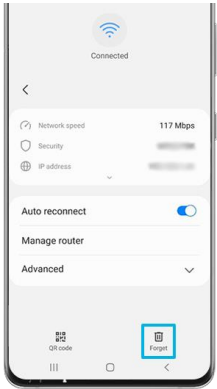
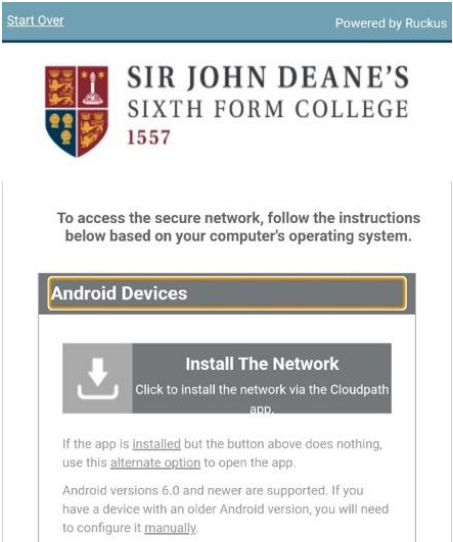
Save & Finish

Click "Save" then "Done"



"Forget" Onboarding Network

Click Onboarding Wi-Fi and Forget





Congratulations! You're Connected You're all set!

Network Access

You now have full access to the college Wi-Fi network

Secure Connection

Your connection is secure and will reconnect when you are onsite

Need Help?

Contact IT support on ithelpdesk@sjd.ac.uk if you encounter any issues