



**SIR JOHN DEANE'S
SIXTH FORM COLLEGE**
1557

Student Guidance

Android Wi-Fi Setup Guide for Sir John Deane's Sixth Form College

This guide will walk you through connecting your Android device to the college Wi-Fi network in a few simple steps. Follow along to get connected quickly and securely.

android 

Step 1: Connect to Onboarding Wi-Fi

Open Settings

Locate and tap the Settings app on your Android device

Find Wi-Fi Settings

Tap "Network and Internet" menu (or Wi-Fi Settings)

Join Onboarding Network

Select and join "Onboarding Wi-Fi" (You can ignore any "no internet access" messages)



Step 2: Download App & Onboard

While connected to Onboarding Wi-Fi:

- Scan the QR Code and download and install the “RUCKUS CloudPath App” from Google Play Store



Do not open CloudPath App
– Follow the guide below

- Open Chrome Browser on your device, navigate to :
- **<http://wifi.sjd.ac.uk>**

You can also scan the QR code shown on the right to access the setup page directly.

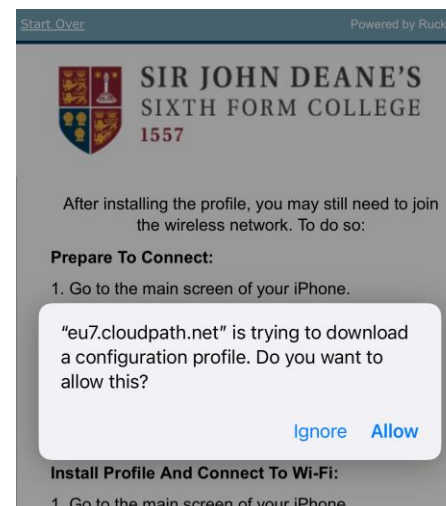
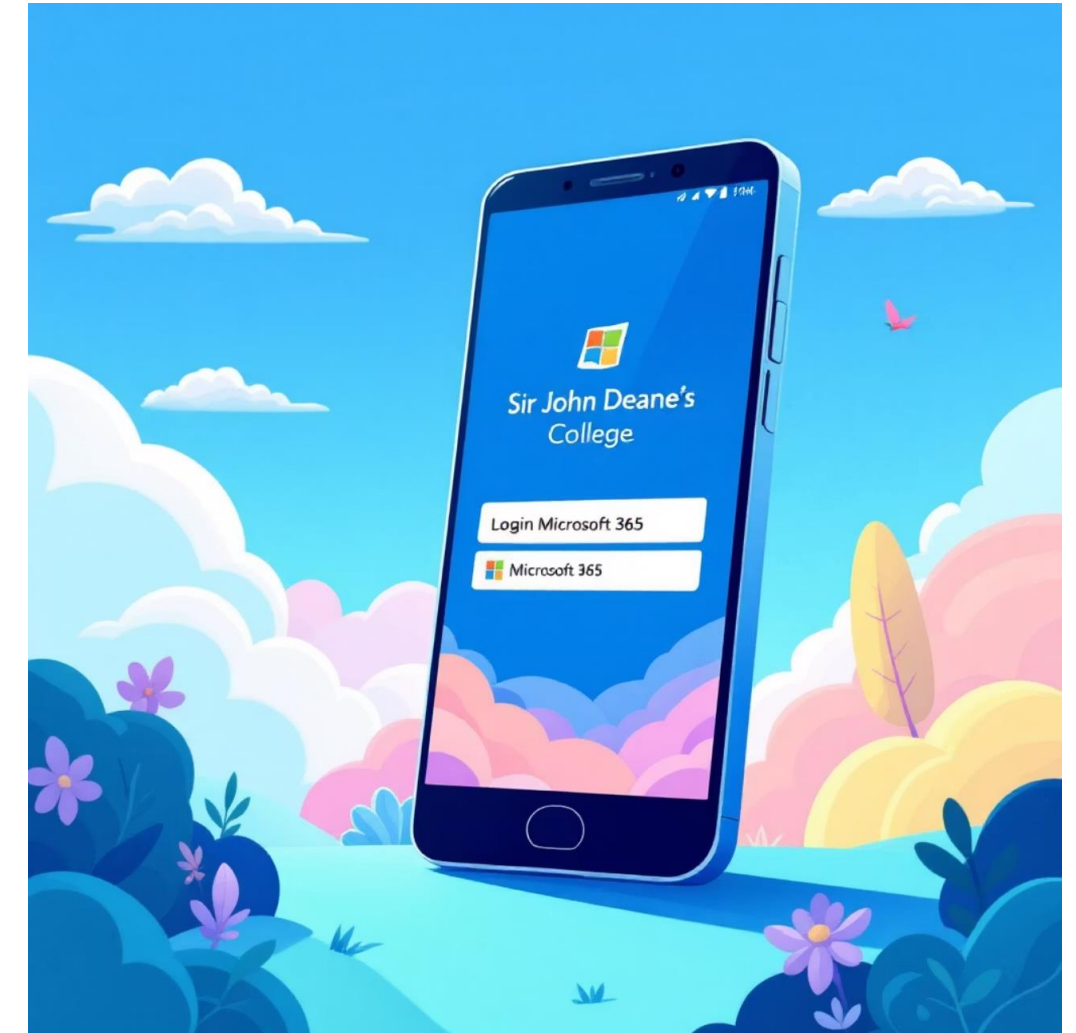


Step 3: Select Sir John Deane's College

On the setup page:

- Select "Sir John Deane's College" from the options
- If not already signed in, you'll be prompted for your Microsoft 365 credentials
- Enter your college email address and password

📄 Your Microsoft 365 credentials are the same ones you use for your college email and other college services.



Step 4: Install the Network



Click "Install the Network"

This opens the Cloudpath app



Accept Permissions

Allow location "while using the app"



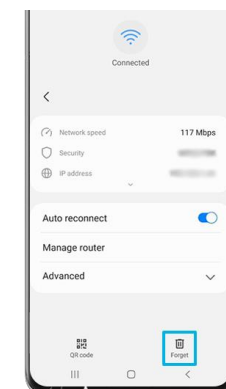
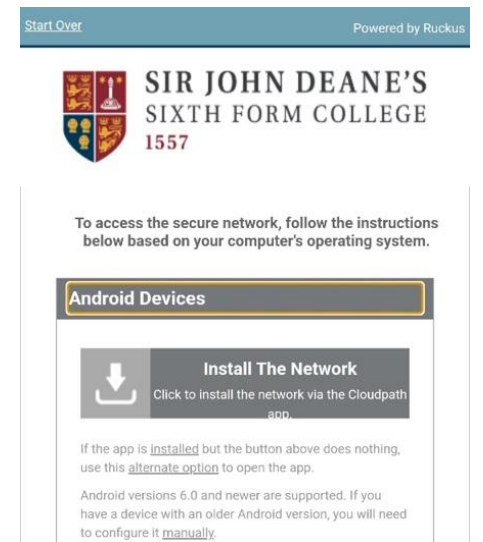
Save & Finish

Click "Save" then "Done"



"Forget" Onboarding Network

Click Onboarding Wi-Fi and Forget



Step 5: Download Security Certificate

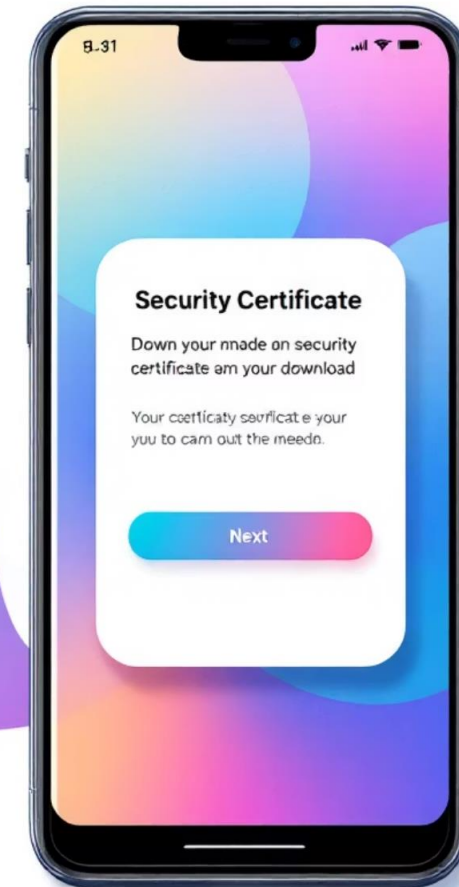
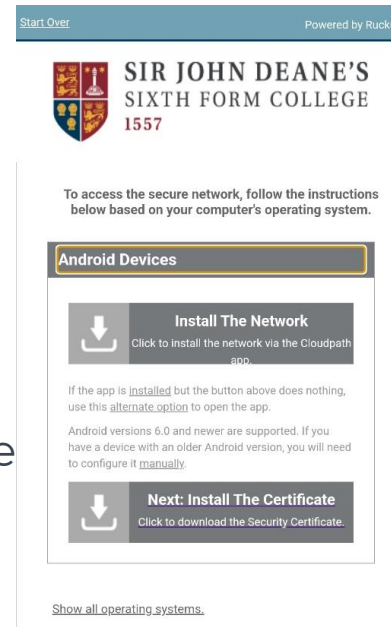
IMPORTANT!

Return to the onboarding page:

- Go to **<http://wifi.sjd.ac.uk>** again or scan below
- This time, click "Next: install the certificate"
- Follow the instructions to download the certificate
- Click "Step 1" to begin

The certificate will save to your default Chrome download folder

You can also scan the QR code shown on the right to access the setup page directly.



Step 6: Installing the Certificate (Samsung/Google)

⚠ This step varies across Android versions and manufacturers!

Open Settings

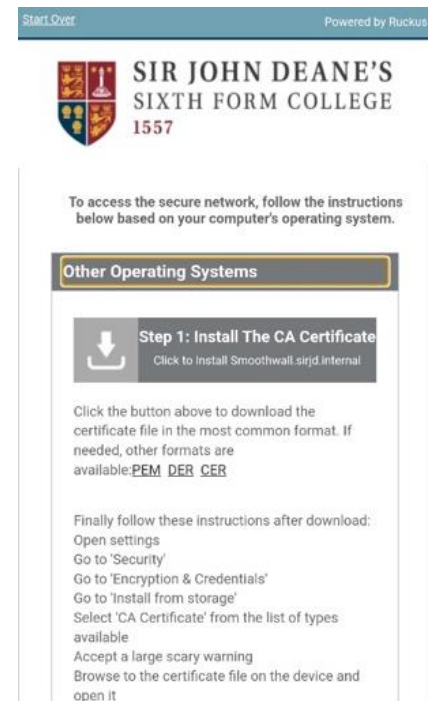
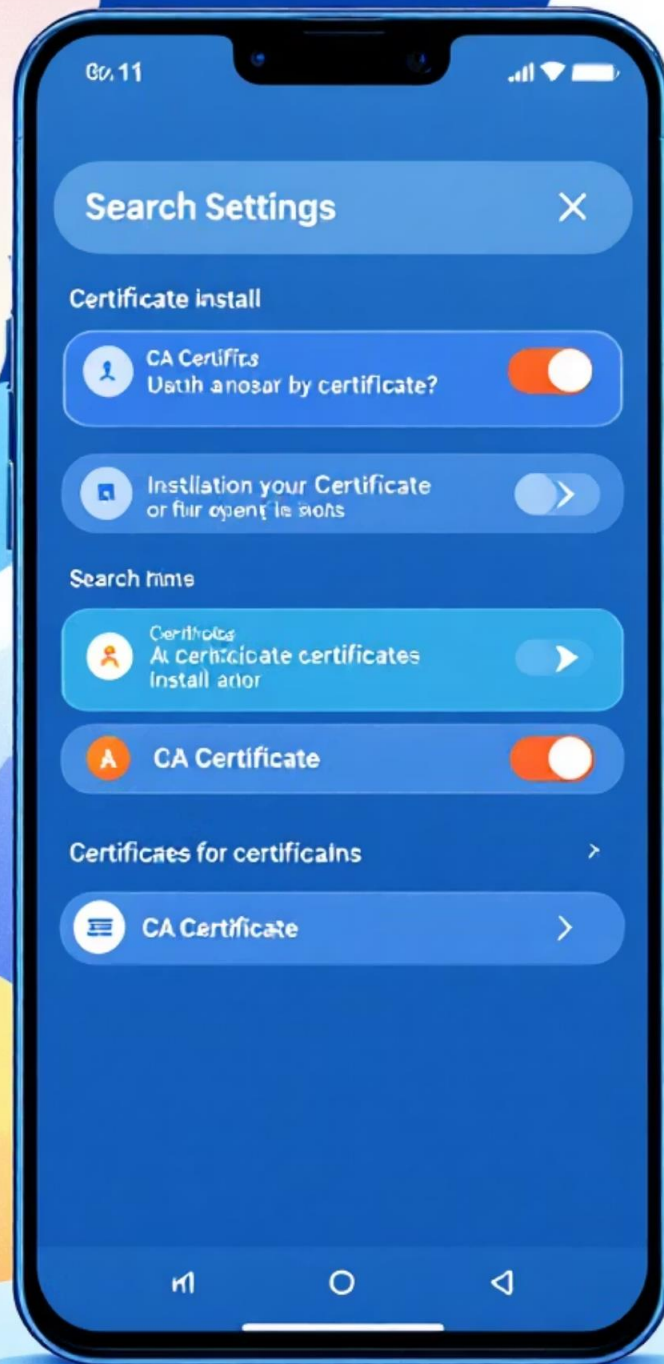
Go to your device Settings app

Search for "certificate"

Use the search function to find certificate settings

Select "CA Certificate"

Tap this option and accept any security warnings



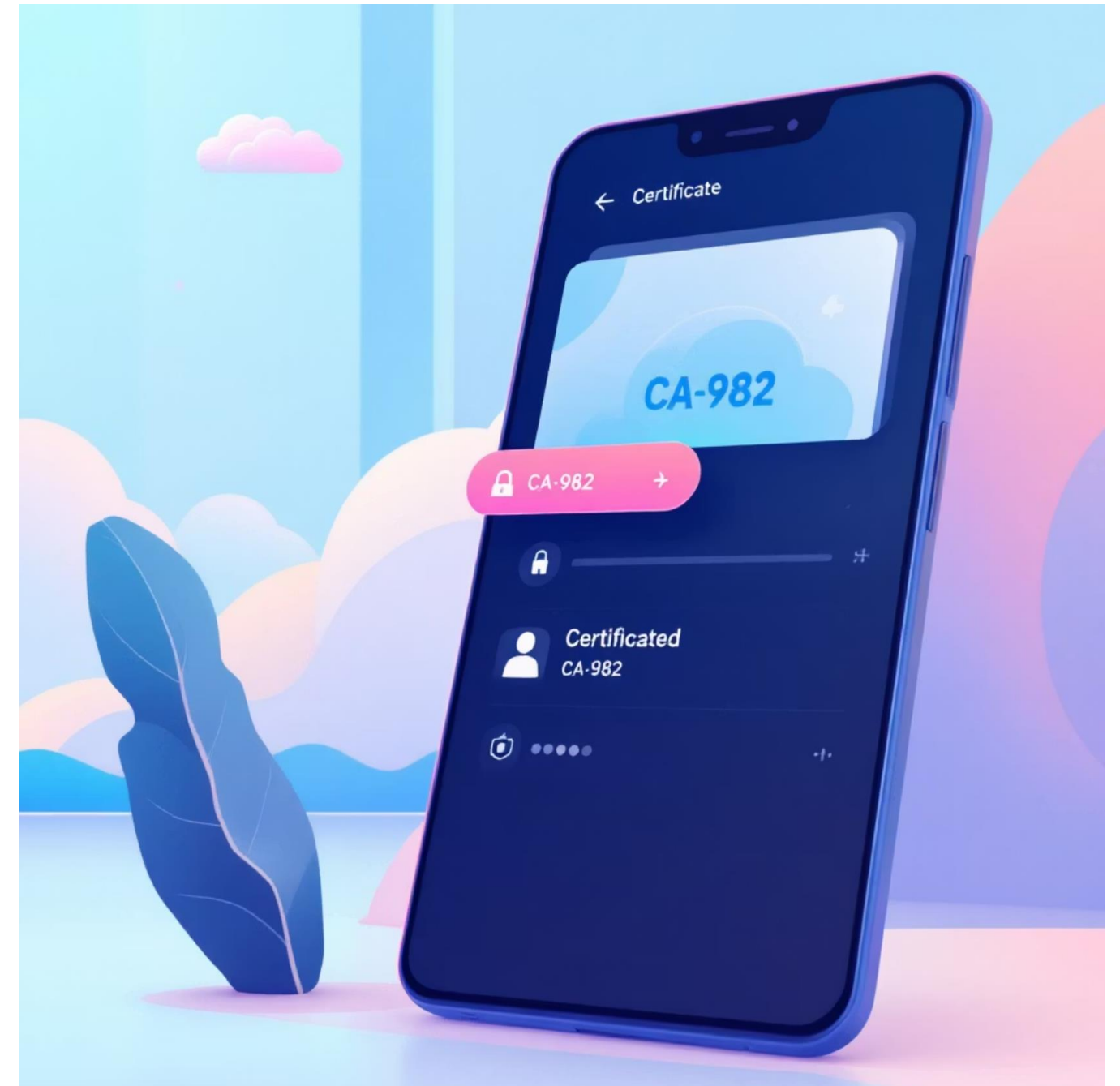
Step 6 Continued: Completing Certificate Installation

Final Steps:

1. Navigate to your download folder
2. Find and tap the file starting with "CA-982..."
3. Tap "Done" when complete



If you have SD cards installed or changed your storage settings, your download location may differ from the default.





Congratulations! You're Connected You're all set!

Network Access

You now have full access to the college Wi-Fi network

Secure Connection

Your connection is secure with the installed certificate

Need Help?

Contact IT support on ithelpdesk@sjd.ac.uk if you encounter any issues