



**SIR JOHN DEANE'S  
SIXTH FORM COLLEGE**  
1557

## Student Guidance

# Apple MacBook Devices Wi-Fi Setup Guide for Sir John Deane's Sixth Form College

This guide will walk you through the step-by-step process of connecting your Apple device to Sir John Deane's Sixth Form College Wi-Fi network. Follow these instructions carefully to ensure proper connection and network access while on campus.

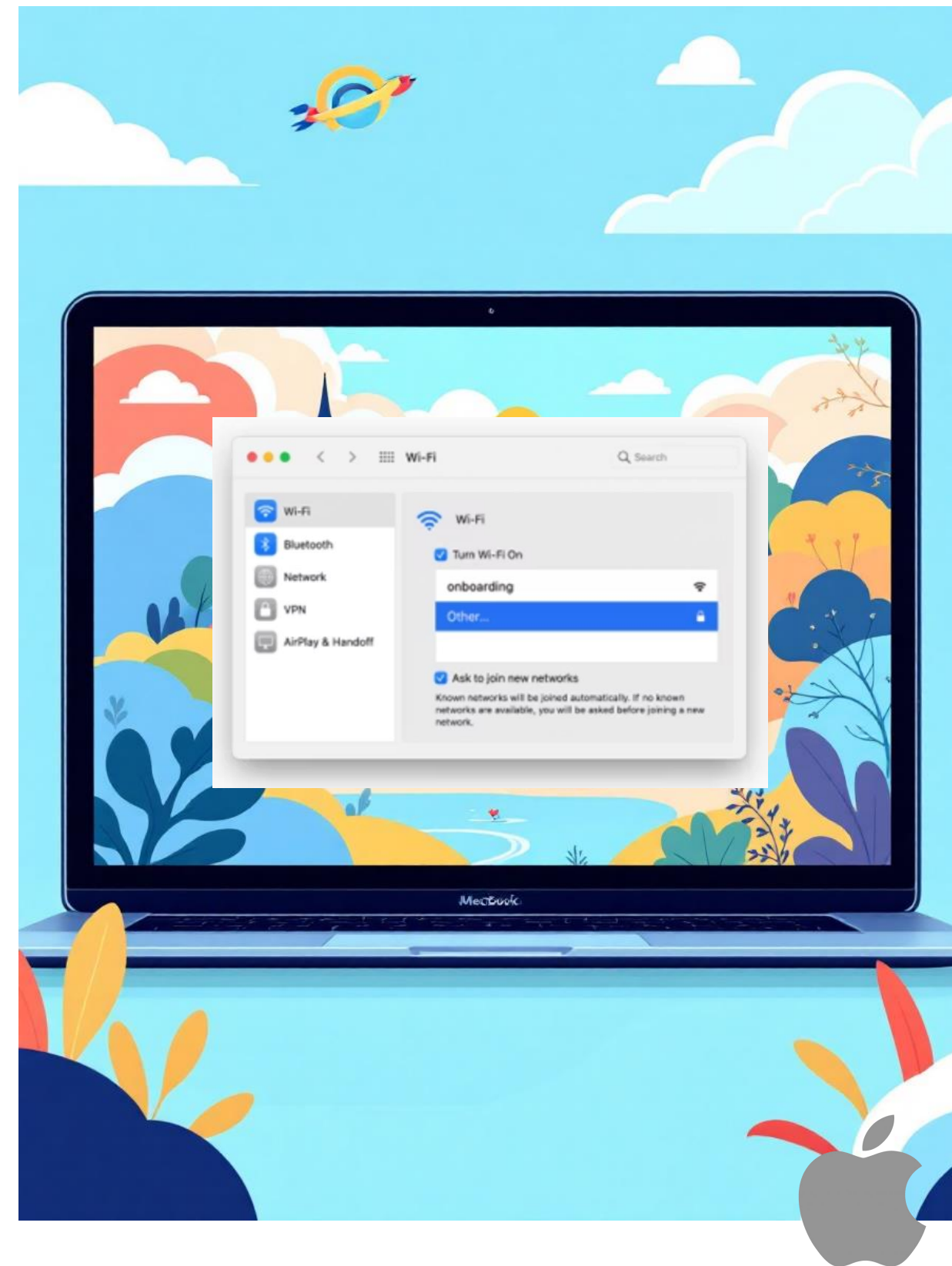


# Step 1: Connect to Onboarding Wi-Fi

First, you'll need to connect to the temporary Onboarding network:

- Open the Settings app on your Apple device
- Tap on Wi-Fi
- Select and join the network called "Onboarding"

**Note:** You may see a message saying "Onboarding wifi has no internet connection" - this is normal and can be ignored.



# Step 2: Open Your Web Browser

## Automatic Redirect

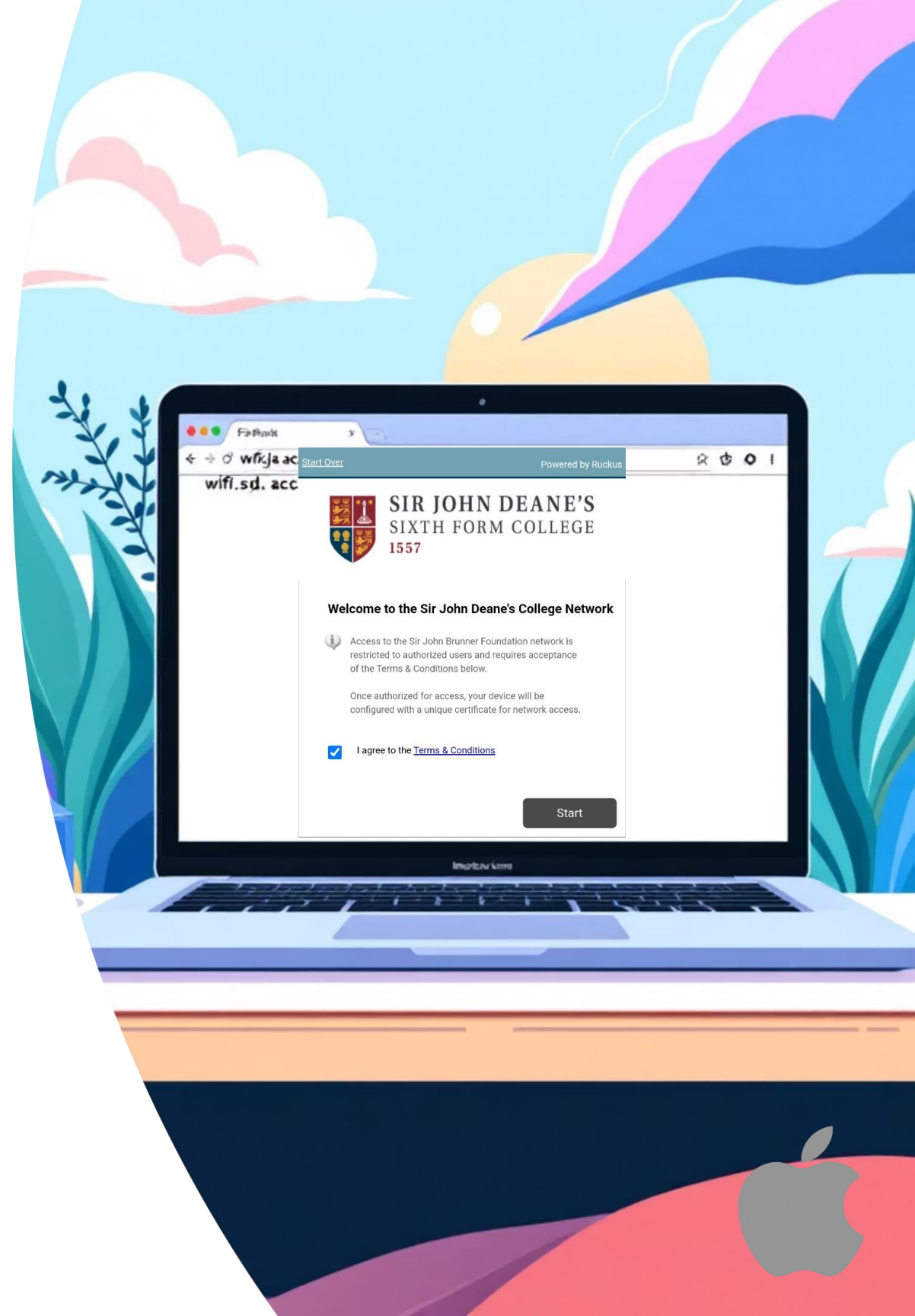
Your device may automatically open the Wi-Fi login webpage after connecting to the Onboarding network.

## Manual Navigation

If no webpage opens automatically, open your browser and go to:  
**<http://wifi.sjd.ac.uk/>**

## QR Code Option

Alternatively, you can scan the QR code provided by the college to access the login page directly.





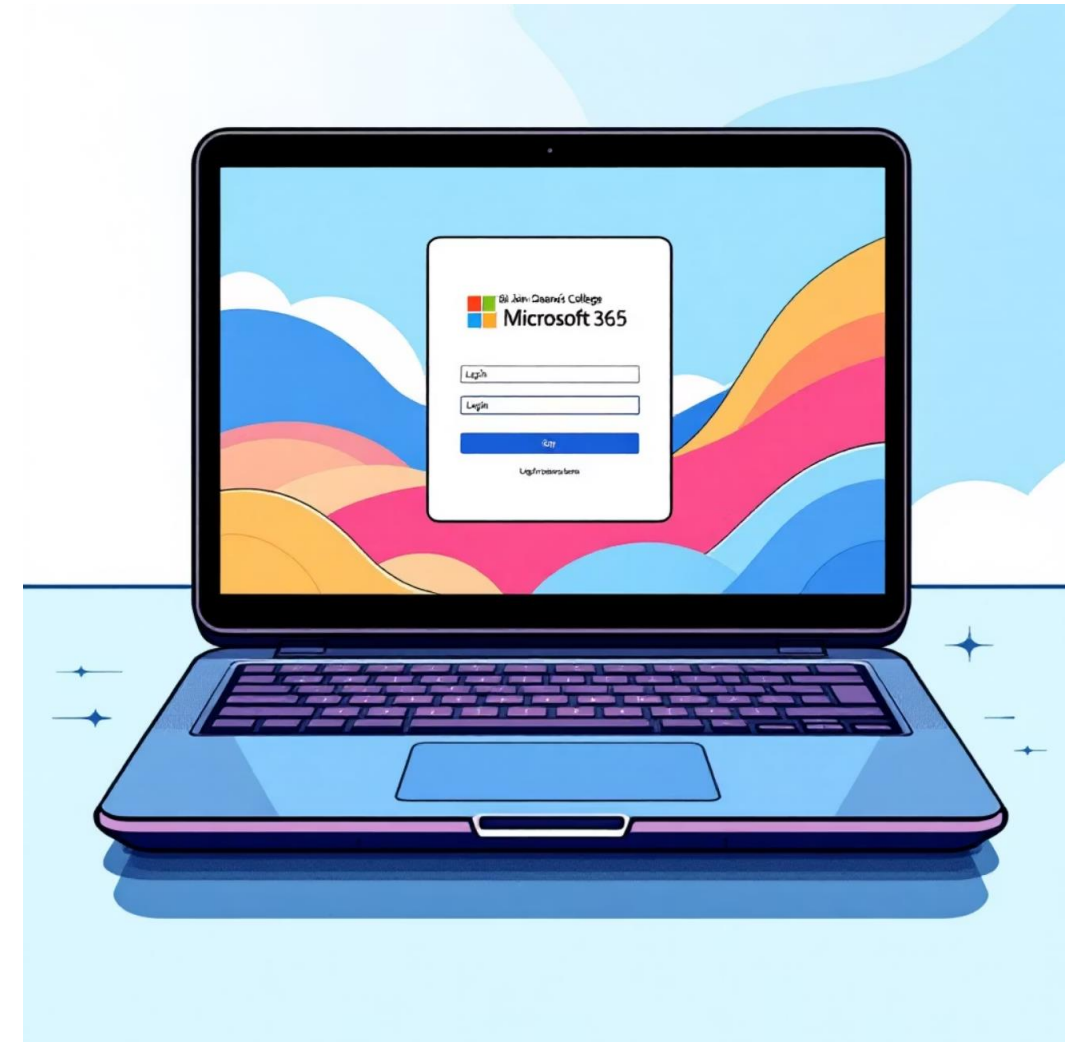
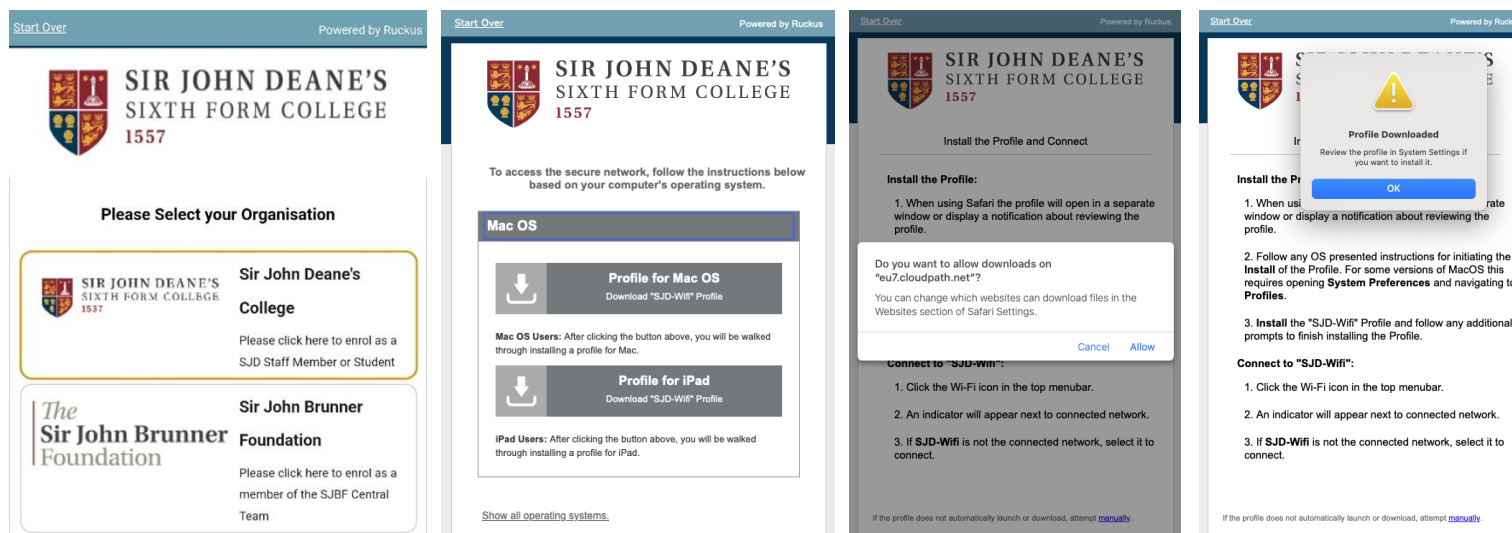
# Step 3: Select Sir John Deane's College

After accessing the Wi-Fi portal:

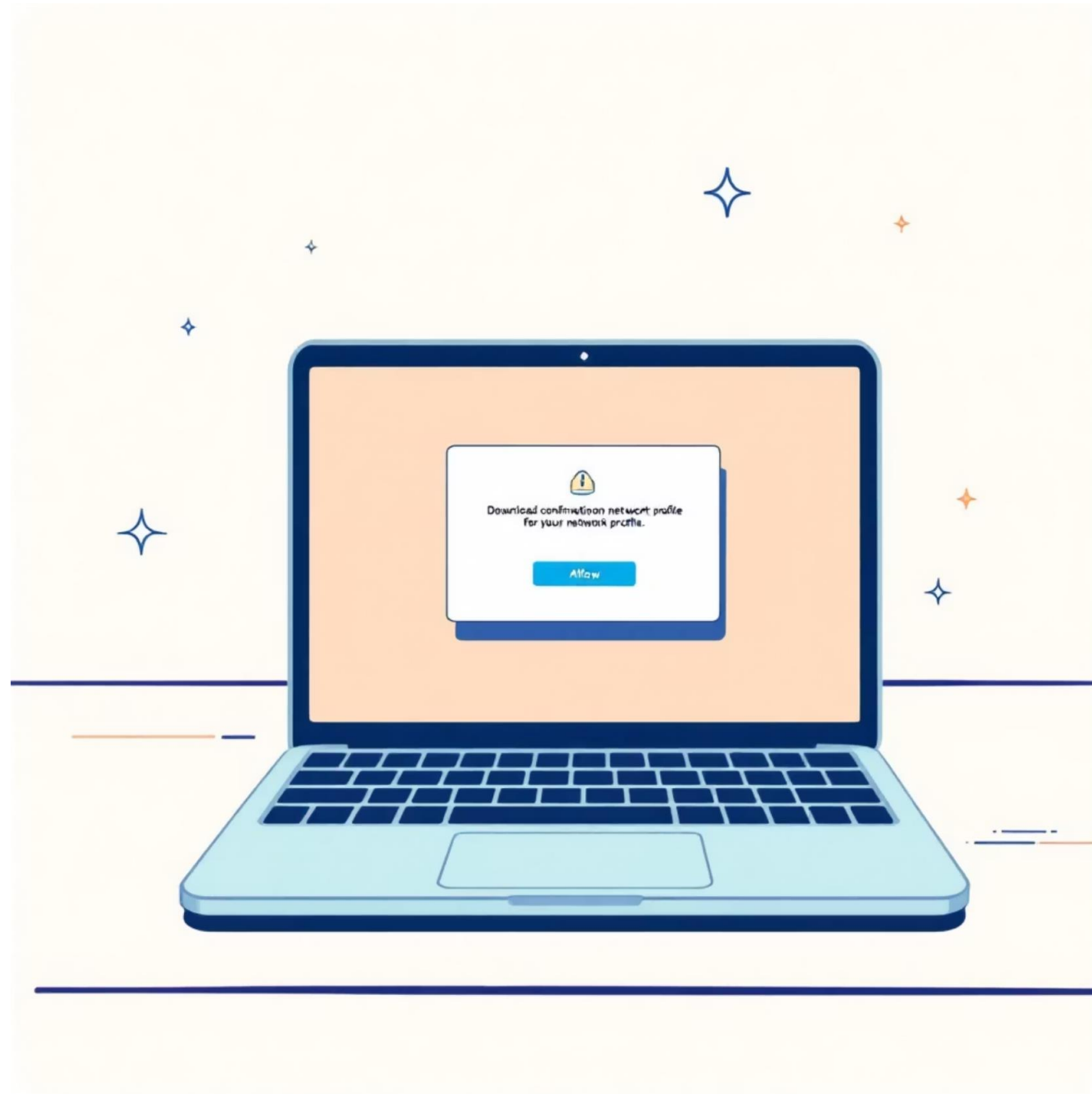
1. You'll be prompted for your Microsoft 365 credentials
2. Enter your college email address and password
3. Select the "Profile for MacOS" option
4. Click "Allow" when prompted to download the profile



This profile contains the necessary settings for your device to connect to the college network securely.



# Profile Download Confirmation



## Important Security Notice

When prompted to download the profile, you'll see a security dialog asking for confirmation. This is a standard security measure to protect your device.

Click **Allow** to continue with the download. The profile is digitally signed by Sir John Deane's College and is safe to install.



# Step 4: Install the Network Profile



## Go to System Settings

Click on the Apple icon in the top left corner of your screen, then select "System Settings"



## Find Downloaded Profile

Look for "Profile Downloaded" in the settings menu



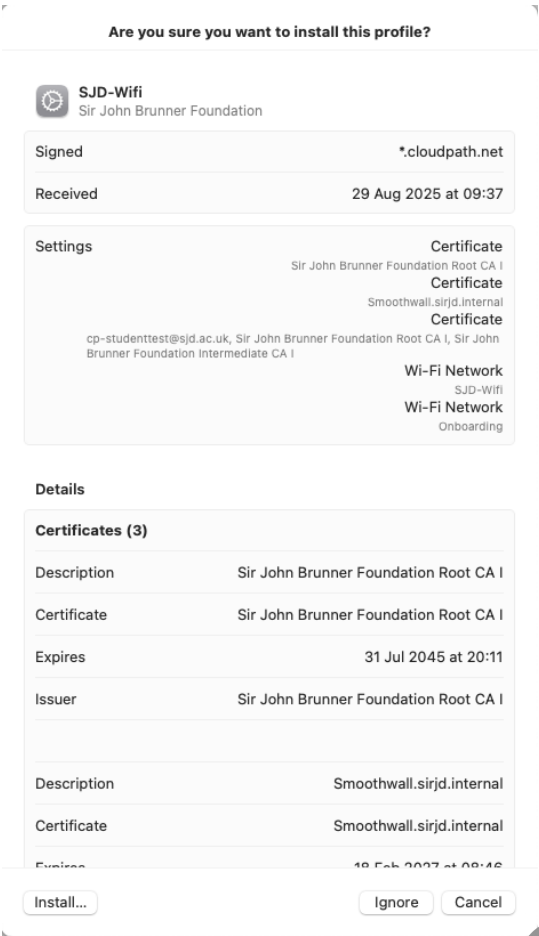
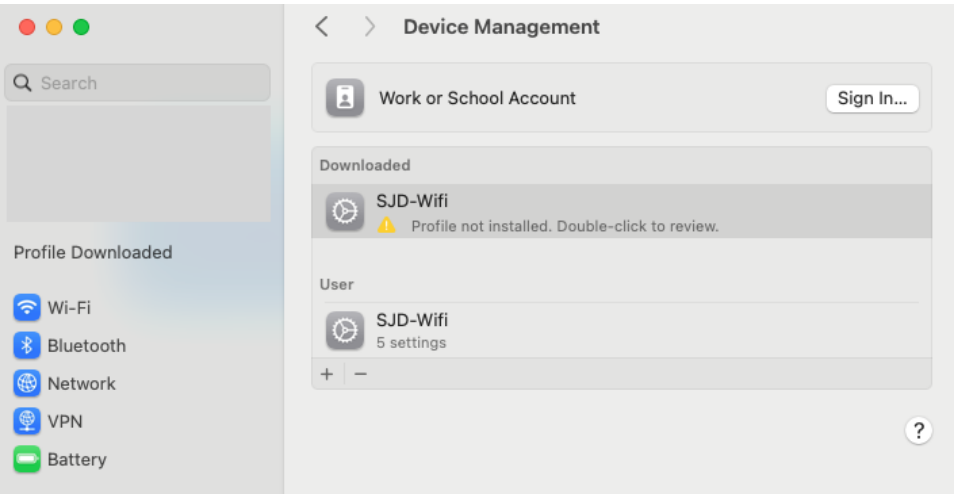
## Install the Profile

Click "Install" and follow any additional prompts

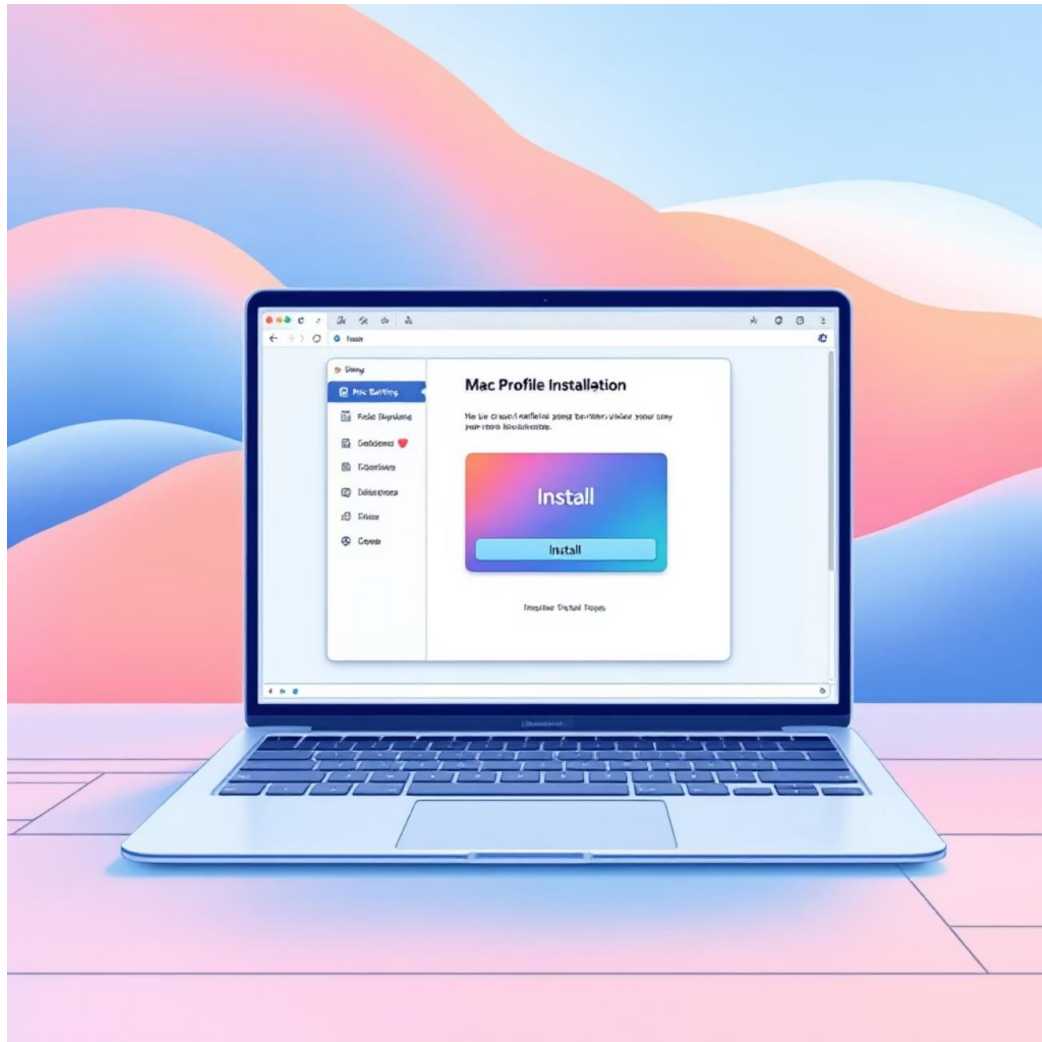


## Confirm Completion

Once installed, tap "Done" to complete the process



# Profile Installation Details



## What Happens During Installation

When installing the network profile:

- Your device will verify the profile's digital signature
- You may need to enter your device password
- The profile configures your device with the correct Wi-Fi settings
- Security certificates for the network are installed

This one-time setup ensures secure and automatic connections to the college network in the future.





# **Success! Your Device is Now Enrolled**

## **Congratulations!**

Your Apple MacBook device is now properly configured to connect to Sir John Deane's College Wi-Fi network. The next time you're on campus, your device will automatically connect to the secure network without requiring these setup steps again.

