



**SIR JOHN DEANE'S
SIXTH FORM COLLEGE**
1557

Student Guidance

Apple Device Wi-Fi Setup Guide for Sir John Deane's Sixth Form College

This guide will walk you through the step-by-step process of connecting your Apple device to Sir John Deane's College Wi-Fi network. Follow these instructions carefully to ensure proper connection and network access while on campus.

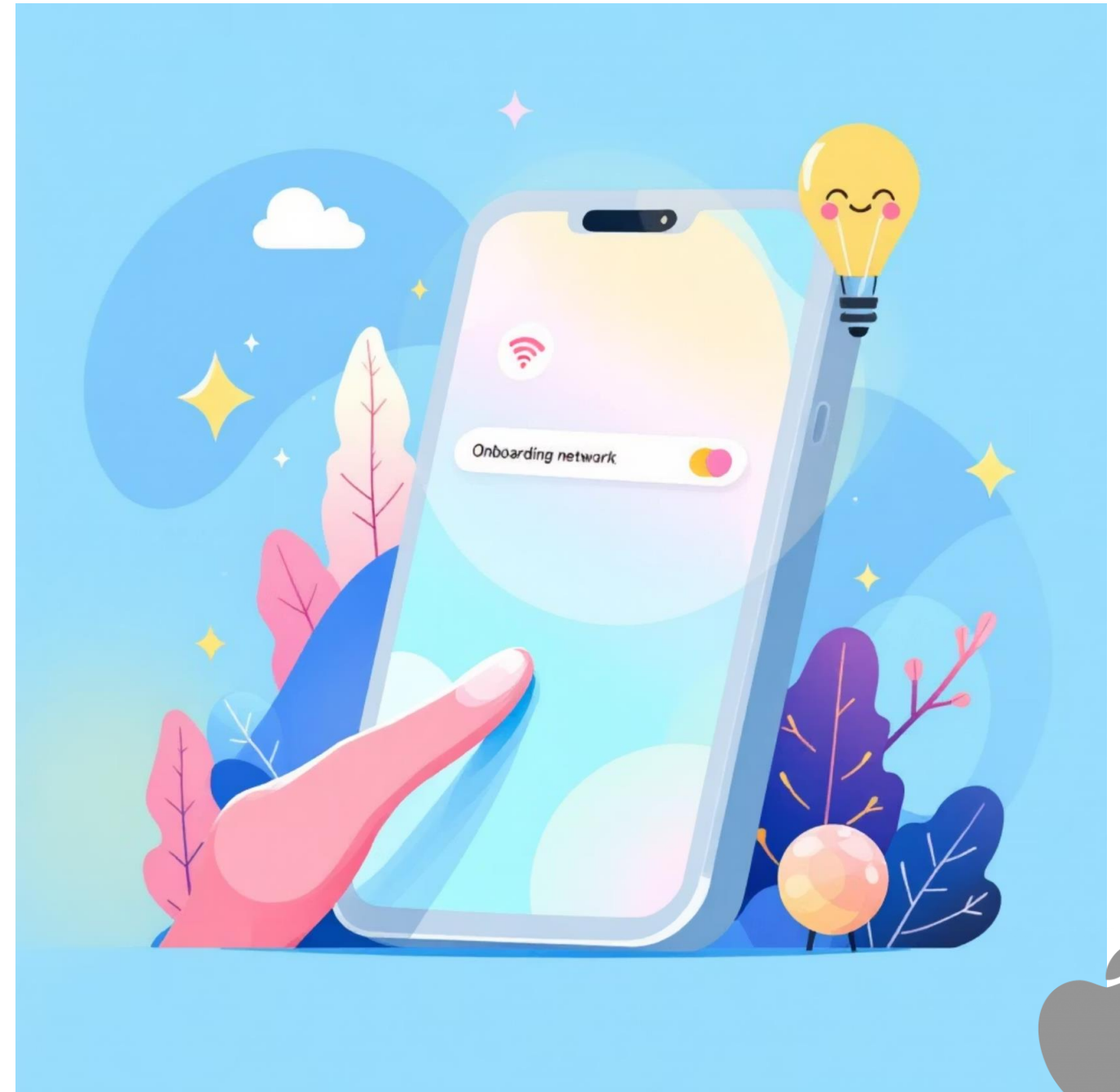


Step 1: Connect to Onboarding Wi-Fi

First, you'll need to connect to the temporary Onboarding network:

- Open the Settings app on your device
- Tap on Wi-Fi
- Select and join the network called "Onboarding"

Note: You may see a message saying "Onboarding wifi has no internet connection" - this is normal and can be ignored.



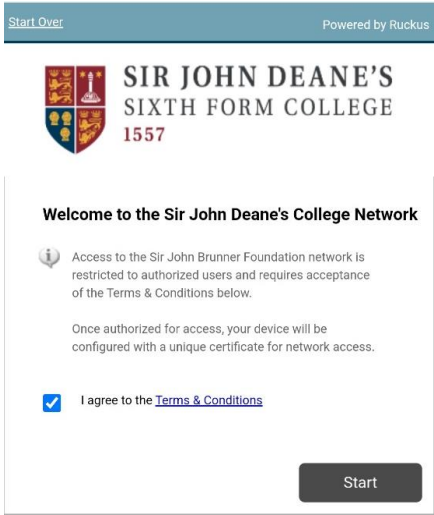


Step 2: Open Safari Browser



Open Safari

Tap the Safari icon on your home screen to launch the browser



Navigate to Portal

If a webpage doesn't open automatically, go to: **<http://wifi.sjd.ac.uk/>**



Alternative: Scan QR Code


You can also scan the QR code provided to access the portal

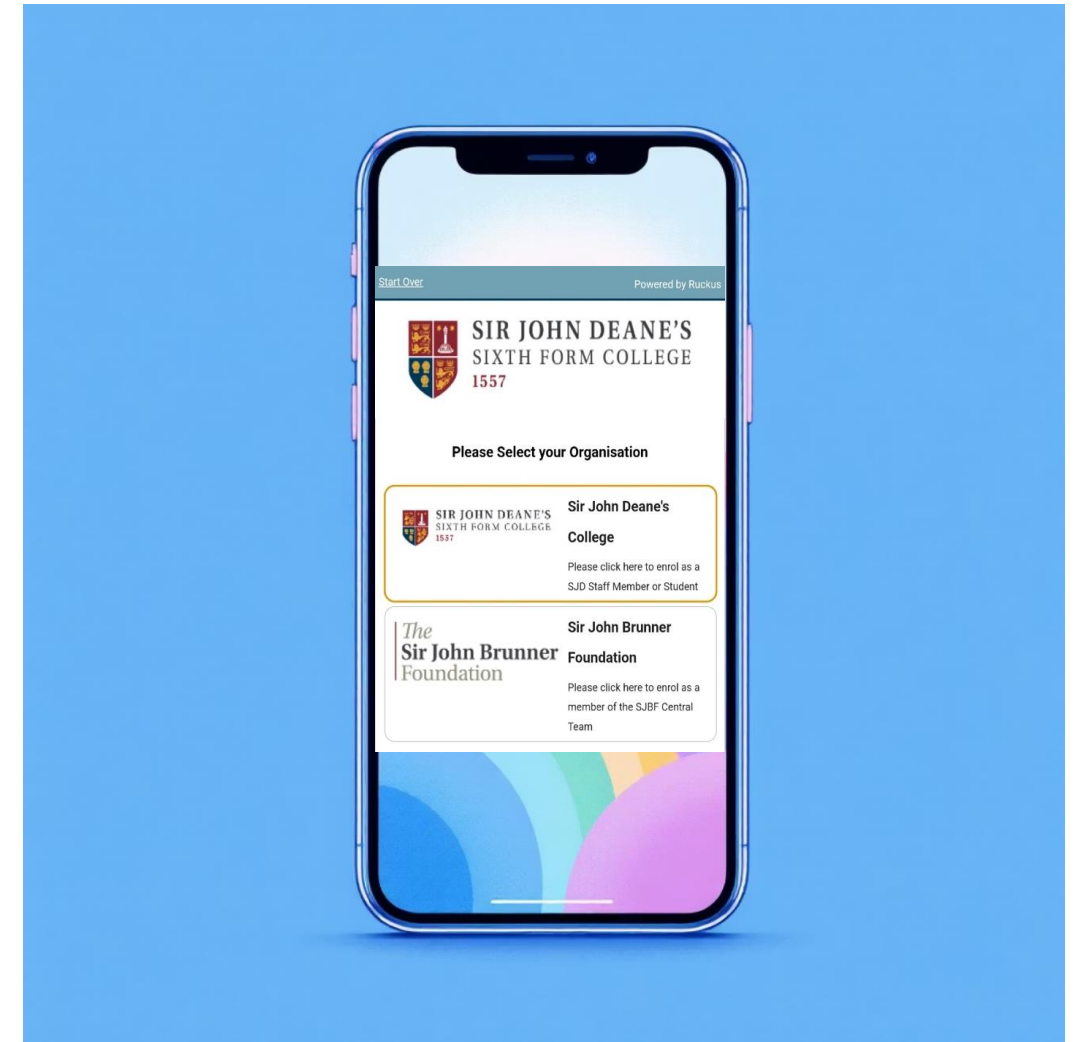
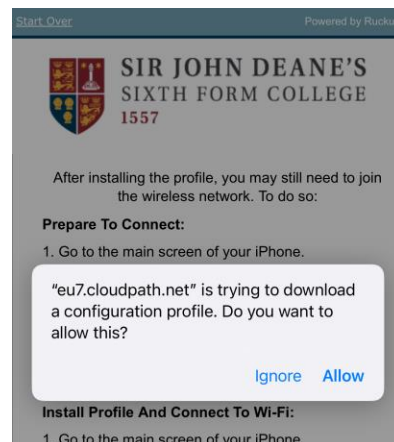


Step 3: Select Sir John Deane's College

After accessing the portal:

- Select "Sir John Deane's College" from the options
- You'll be prompted for your Microsoft 365 credentials
- Enter your college email address and password
- Click "Allow" when prompted to download the profile

 Your Microsoft 365 credentials are the same ones you use for your college email and other college services.

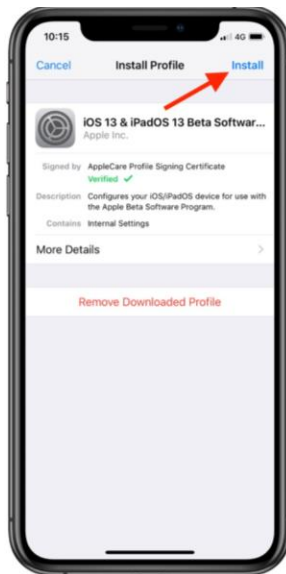
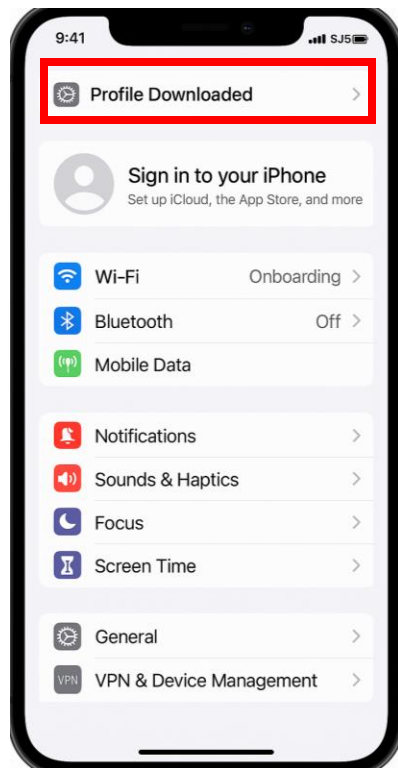


Profile Downloaded



Airplane Mode

Step 4: Download and Install the Profile



Go to Settings

Return to your iPhone's home screen and tap the Settings icon

Install Profile

Tap "Profile Downloaded" near the top of the Settings menu, then tap "Install" and follow the prompts

Complete Installation

Once installed, tap "Done" to complete this step



Step 5: Activate Certificate Trust Settings



For security reasons, you need to enable trust settings for the network certificate:

1. Go to the main screen of your iPhone
2. Tap the Settings icon
3. Tap General → About
4. Tap Certificate Trust Settings
5. Locate "Smoothwall.sirjd.internal" and toggle it to enabled

This step is crucial for your device to properly authenticate with the college network.



Step 5: Connect to SJD-Wifi Network

Open Wi-Fi Settings

Go to Settings → Wi-Fi

Enable Wi-Fi

Make sure the Wi-Fi switch is toggled On

Select Network

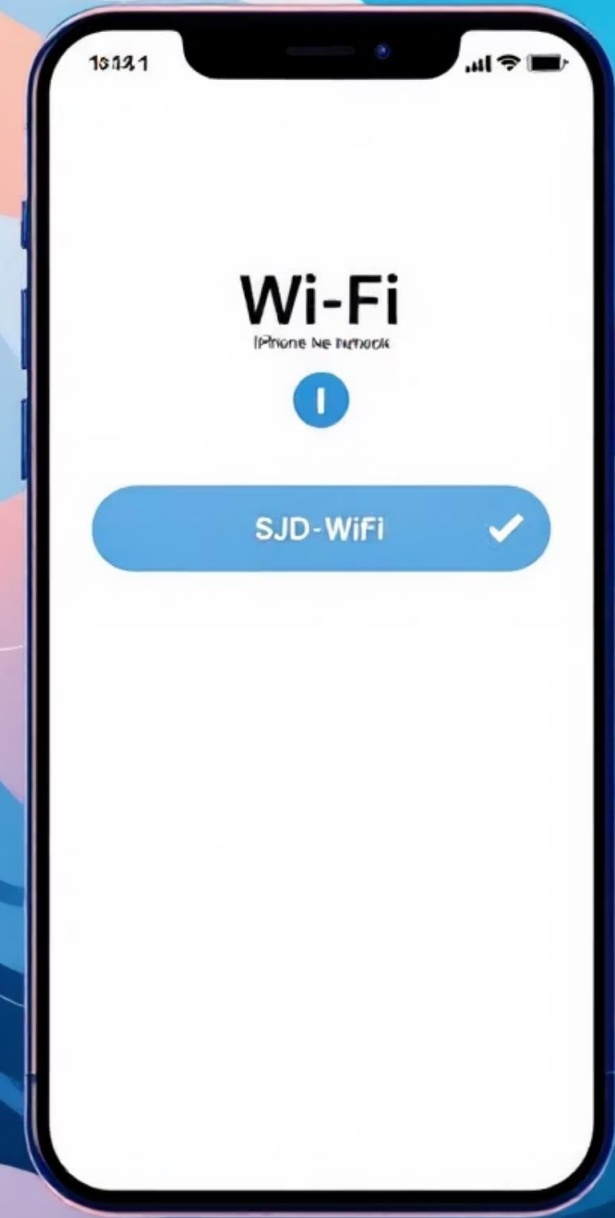
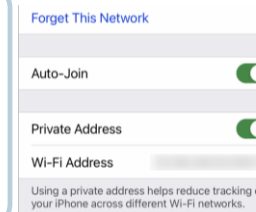
Check the "SJD-Wifi" network is ticked from available networks

Automatic Connection

Your device should connect automatically using the installed profile

"Forget" Onboarding Network

Click "Settings" Wi-Fi then press ⓘ next to Onboarding





Success! Your Device is Now Enrolled

Congratulations!

Your Apple device is now successfully connected to the Sir John Deane's College Wi-Fi network. You should be able to access all college online resources and the internet through this connection while on campus.

- ✔ Your device will automatically connect to SJD-Wifi whenever you're on campus, without needing to repeat this setup process.

Need Help?

Contact IT support on ithelpdesk@sjd.ac.uk if you encounter any issues

