



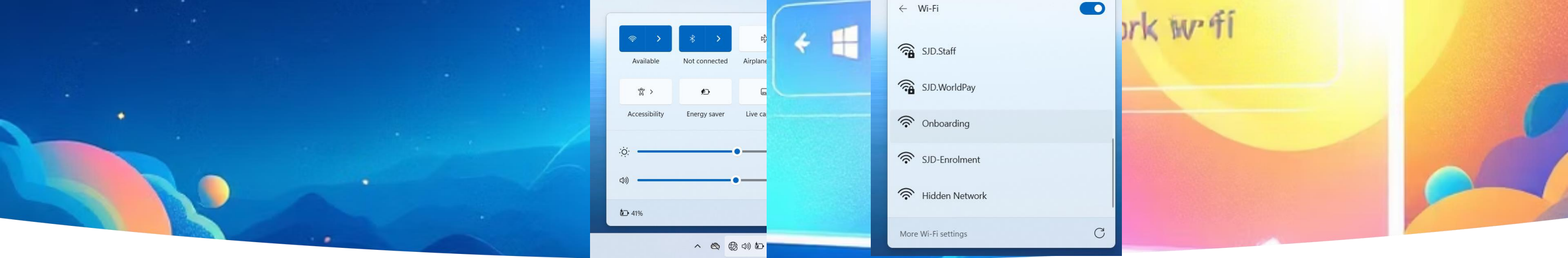
SIR JOHN DEANE'S
SIXTH FORM COLLEGE
1557

Student Guidance

Windows 11 Wi-Fi Setup Guide for Sir John Deane's Sixth Form College

This guide will walk you through the process of connecting your Windows 11 device to the Sir John Deane's College Wi-Fi network. Follow these step-by-step instructions to get connected quickly and securely.





Step 1: Connect to the Onboarding Network

Click the Wi-Fi icon

Find and click the Wi-Fi icon located in the system tray (bottom-right corner) of your Windows 11 taskbar.

Select "Onboarding"

From the list of available networks that appears, locate and select the network named "Onboarding".

Click Connect

Click the Connect button to join the Onboarding network. Note: You may not have internet access at this point - that's expected.

Step 2: Launch the CloudPath Portal

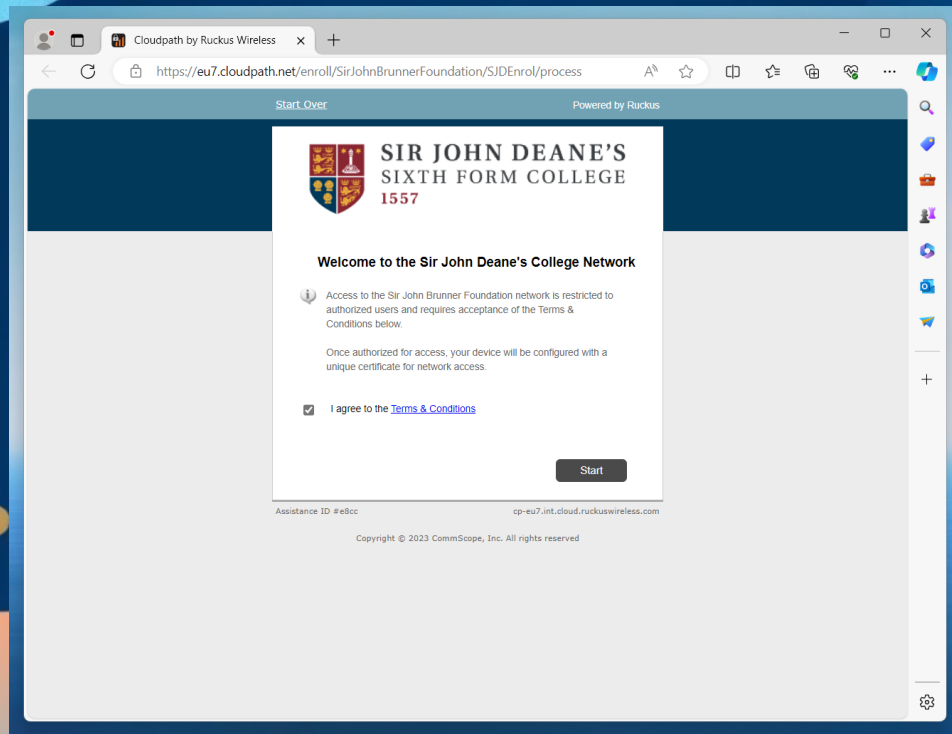
Open Your Web Browser

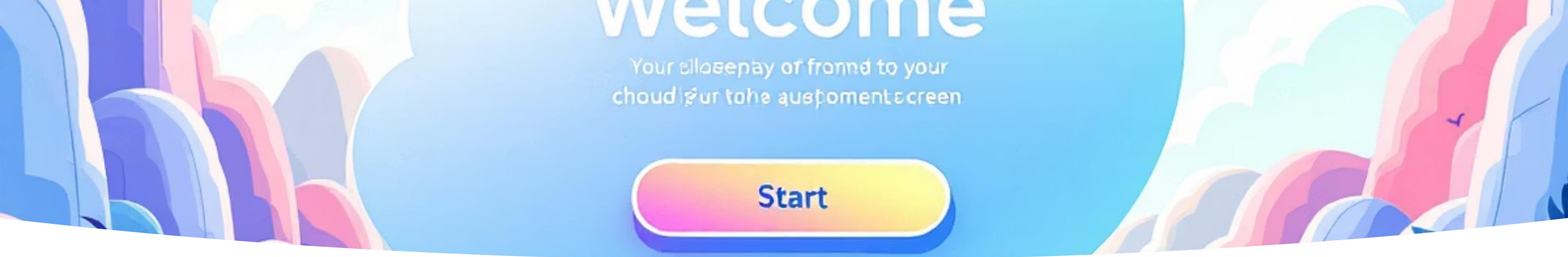
Launch your preferred web browser (such as Microsoft Edge, Google Chrome, or Firefox).

Navigate to the Portal

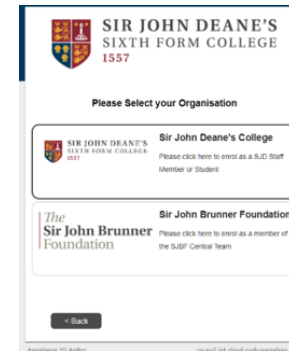
In the address bar, type: wifi.sjd.ac.uk

The CloudPath onboarding portal might load automatically after connecting to the Onboarding network. If not, manually enter the address.





Step 3: Begin the Onboarding Process



Click Start

On the CloudPath portal page that appears, locate and click the Start button to begin the setup process.



Select Your Institution

From the list of educational institutions, choose "Sir John Deane's Sixth Form College".



Log In

Enter your student email address and password when prompted to authenticate.

Step 3 (Continued): Download and Run CloudPath

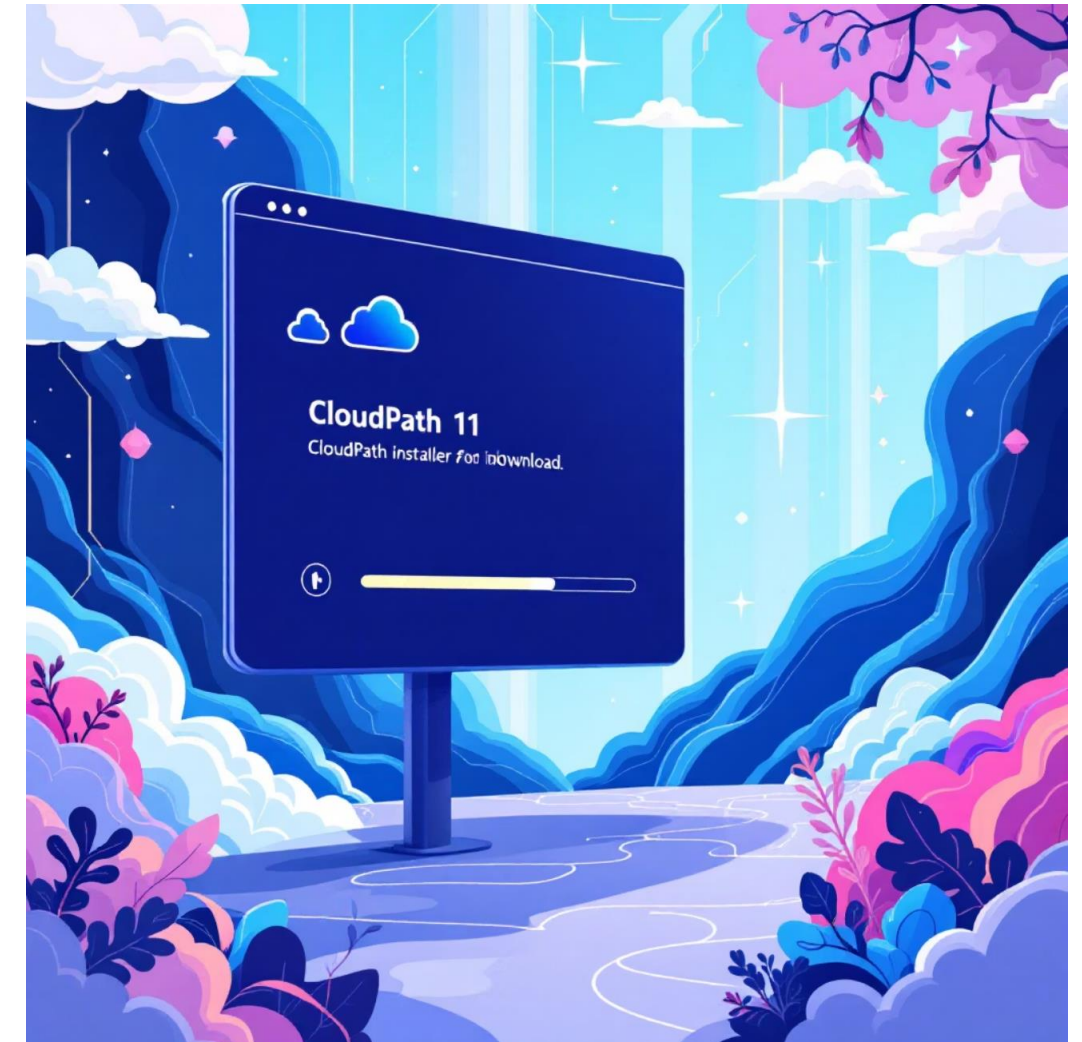
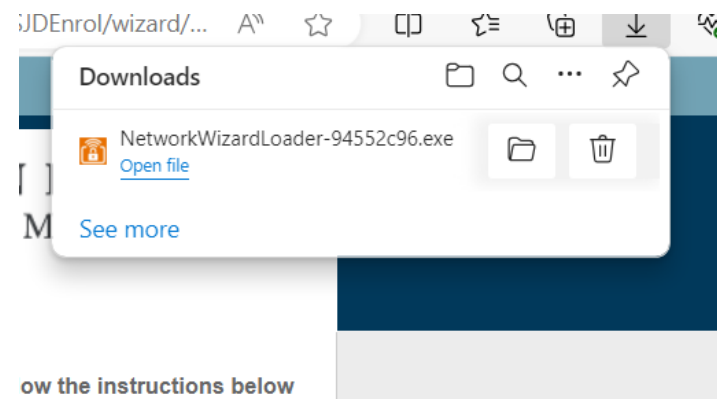
Download the Installer

When given the option, click on "Download .exe for Windows" to download the CloudPath installer file.

Run the Installer

Once downloaded, run the CloudPath installer by clicking on the downloaded file. The CloudPath application will appear on screen and continue the installation process.

- 📄 You may need to approve security prompts that appear during this process.



Step 3 (Continued): Certificate Installation

Certificate Requests

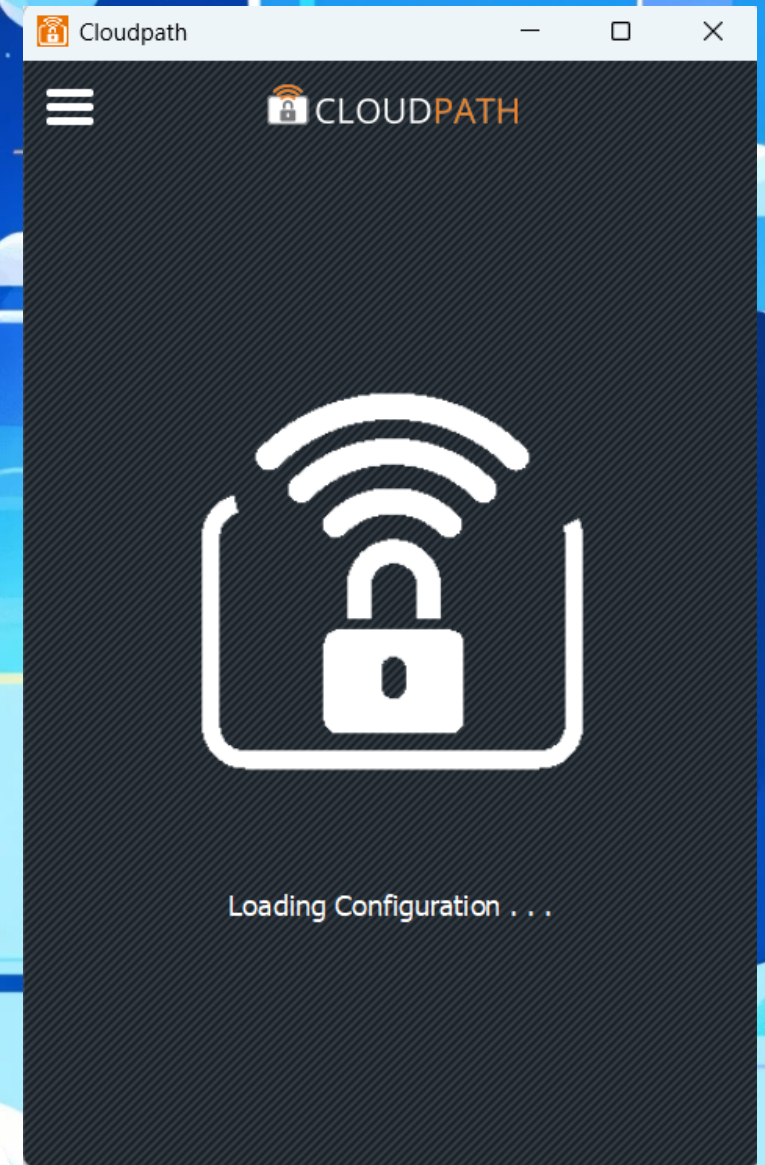
During the installation process, you will receive two certificate installation requests. These are necessary for secure connection to the college network.

Accept the Certificates

For each certificate installation request that appears, click "Yes" to accept and install it. This allows your device to securely authenticate with the network.

Follow On-Screen Instructions

Continue following any additional on-screen instructions provided by the CloudPath application to complete the setup process.



Step 4: Connect to the Secure Network



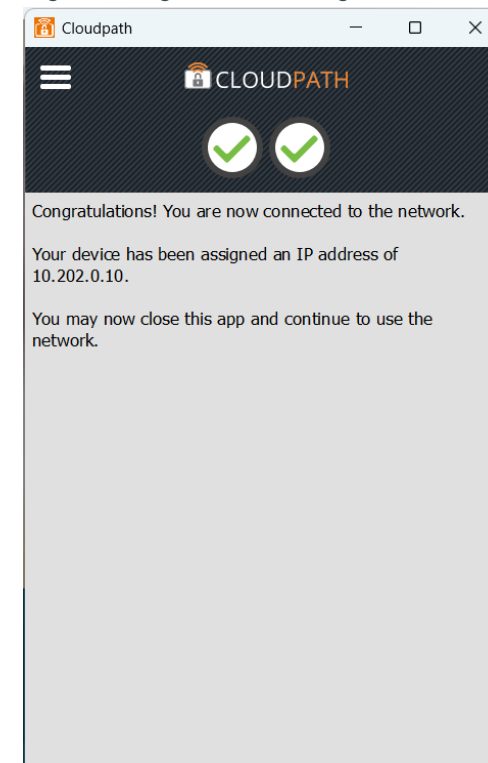
Automatic Network Switch

Once the onboarding process is complete, your device will automatically switch from the "Onboarding" network to the secure "SJD-Wifi" network.

Verify Connection

You should now have full internet access. You can verify this by opening your browser and visiting any website.

The WiFi icon in your system tray should show that you're connected to "SJD-Wifi".



Troubleshooting Tips



Portal Not Loading

If the portal doesn't automatically load, try manually visiting **wifi.sjd.ac.uk** or **1.1.1.1** in your browser.



Check System Time

Ensure your system time and date are correct, as incorrect settings can interfere with network authentication.



Restart Device

If the secure network doesn't appear after completing the onboarding process, try restarting your device.

You're Connected!

Welcome to Sir John Deane's WiFi Network

You have successfully connected to the Sir John Deane's WiFi network. You now have full access to the internet for your academic needs. If you encounter any issues with your connection in the future, please refer back to the troubleshooting tips or contact IT support.

